

DATA SHEET

Frame Pedestals



Testing frame 3000 kN cap. model 50-C56Z00 with pedestal code 50-C59/B

General description

All the pedestals in the range are made of steel and are designed to make use of the compression machine straightforward, providing easy specimen loading and machine control.

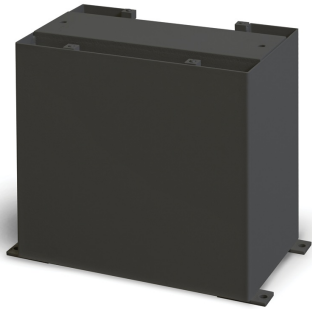
Specifications

Code 50-	Pedestal dimensions (wxdxh) mm	For machines/frames	Approx. weight [kg]
A19/B	660x370x400	50-C92xxx 50-C13xxx 50-A12xxx	36
C29/B	620x420x400	50-C23xxx 50-C25xxx 50-A22xxx	29
C39/B	670x400x400	50-C34xxx 50-C35xxx 50-A32xxx	40
C49/B	650x310x425	50-C42xxx 50-C46xxx 50-C47xxx	35
C59/B	740x370x375	50-C52xxx 50-C56xxx 50-C57xxx	36
A29/B	670x630x200	50-A29xxx 50-A39xxx	35

DATA SHEET



Pedestal models 50-C99/B, 50-C29/B and 50-C39/B



Products

50-A19/B

Base for frames and testing machines model 50-A12xxx, 50-C13xxx and 50-C92xxx

50-C29/B

Base for frames and testing machines model 50-C23xxx, 50-C25xxx and 50-A22xxx

50-C39/B

Base for frames and testing machines model 50-C34xxx, 50-C35xxx and 50-A32xxx

50-C49/B

Base for 2000 kN 50-C46xxx, 50-C47xxx, 50-C43xxx, 50-A42xxx and 50-C45xxx frames/machines

50-C59/B

Base for 3000kN EN frames